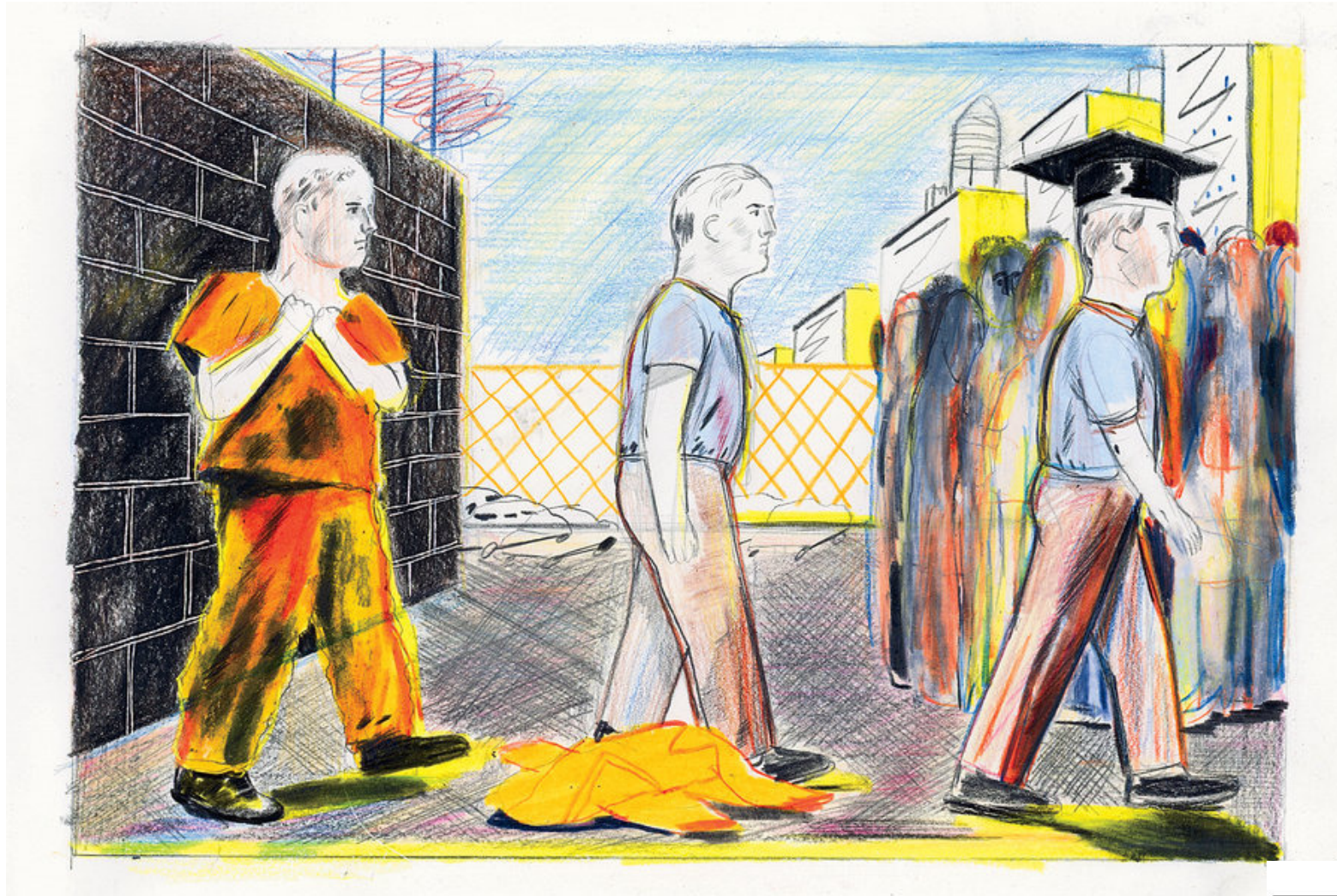


The Prison To College Pipeline: Supporting Justice-Involved Students



Presented by: Anne-Marie Beck & Debra Arviso

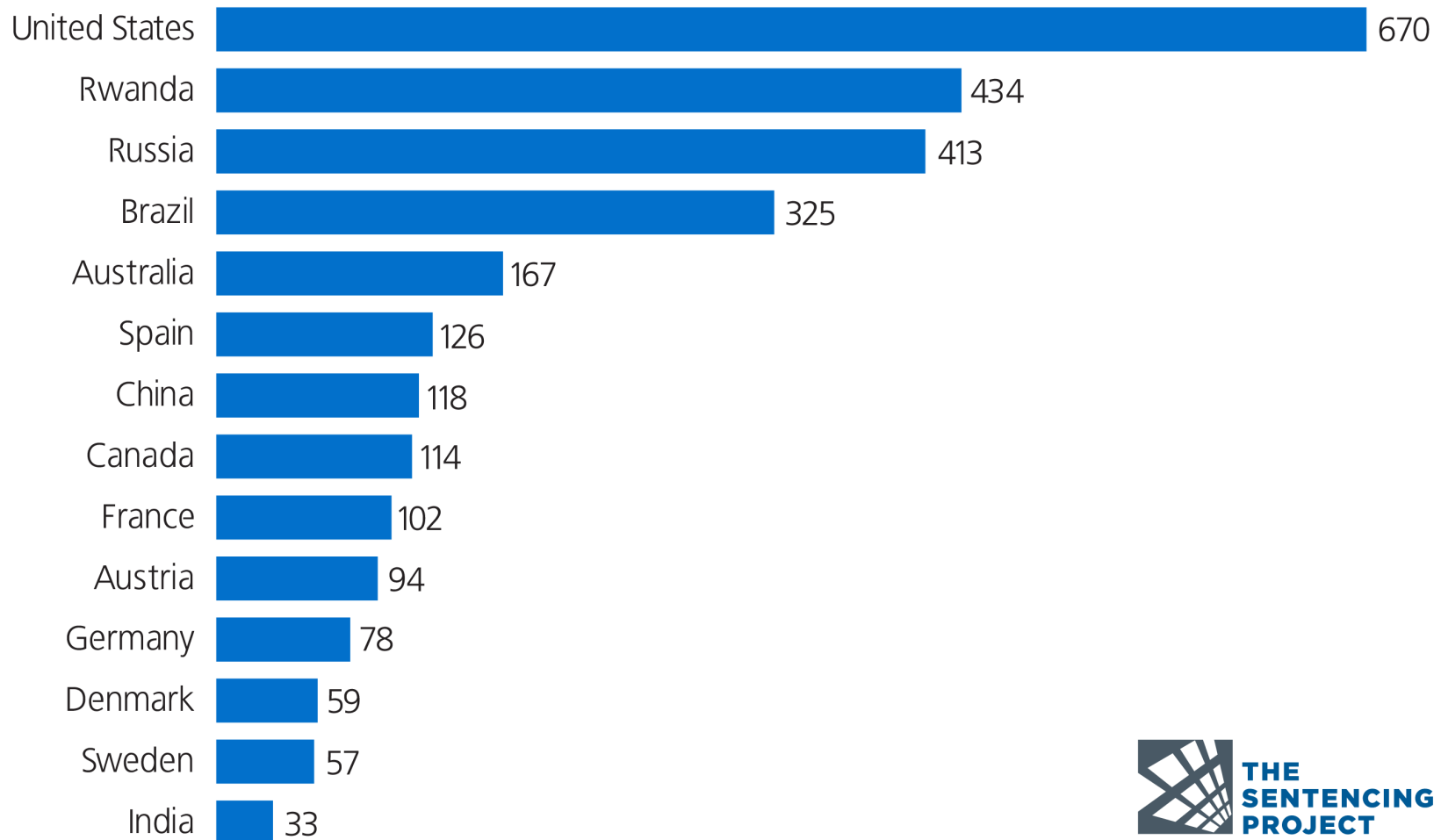


Current U.S. Prison Population = over 2 million



Compared to the rest of the world..

International Rates of Incarceration per 100,000



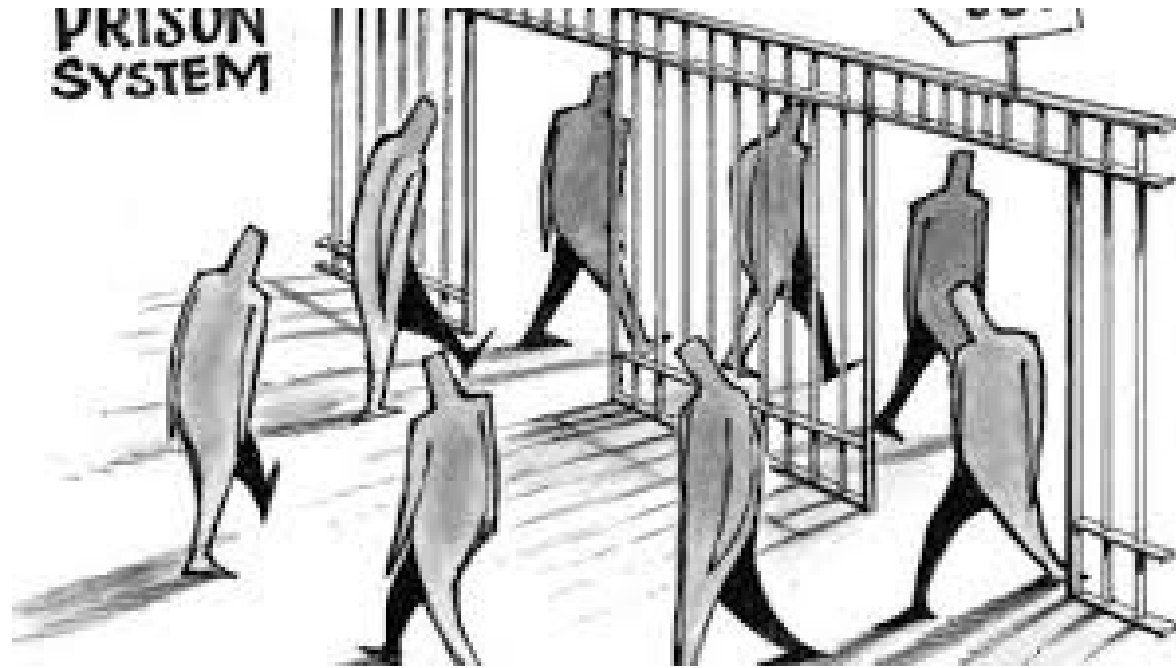


- Population of inmates in California: 83,000
- Several million Californians currently living with criminal convictions
- Approximately 400,000 Californians living under supervision / parole per year
- Nearly 90% of people under supervision are within 15 miles of public college campus

Sources: World Prison Brief &

Degrees of Freedom: Expanding Opportunities for Currently and Formerly Incarcerated Californians

Recidivism: a tendency to relapse into a previous condition or mode of behavior; especially: relapse into criminal behavior



California's rate of recidivism =
one of the highest in the country: 58%

Source: Merriam-Webster Dictionary & Pew Charitable Trust:
"State of Recidivism The Revolving Door of America's Prisons" 2011

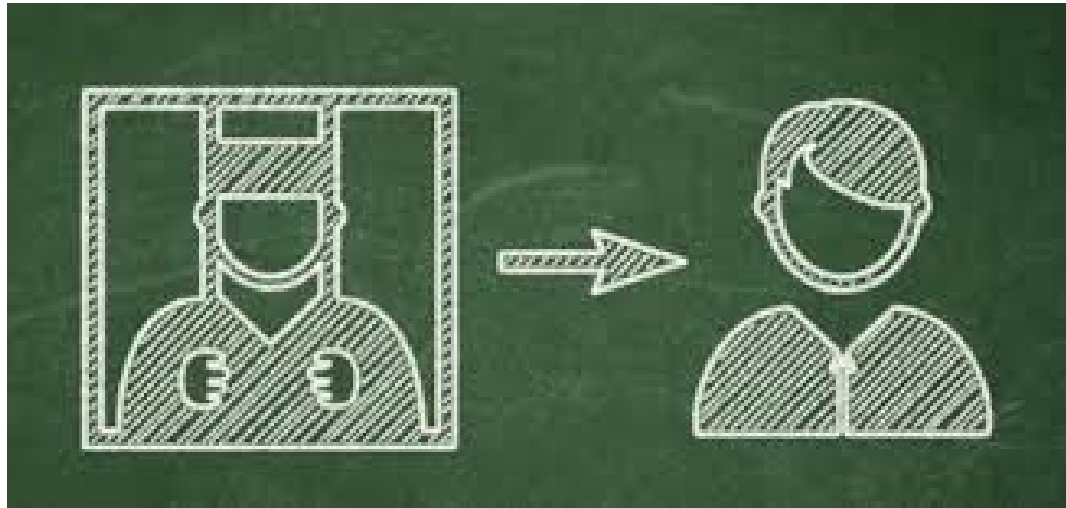
The Power of an Education



Meta-Analysis by the RAND Corp: Individuals who participate in college programs while in custody = 51% lower odds of recidivating

Source: Davis LM, Bozick R, Steele JL, Saunders, J., Miles, J. (2013)

...and the Power of Employment



Employment = major predictor of recidivism
(regardless of criminal classification)

Source: Nally, M., Lockwood, S., Ho, T., & Knutson, K. (2009)

Trauma & The Incarcerated Population

2009 Study of
4,000 inmates:

56% of men

54% of women



Reported physical abuse in childhood

Source: Wolff, N., Shi, J., & Siegel, J.A. (2009)

Definition of Trauma



An event that is experienced as physically or emotionally harmful or life threatening and that has lasting adverse effects on the individual's functioning and well-being.

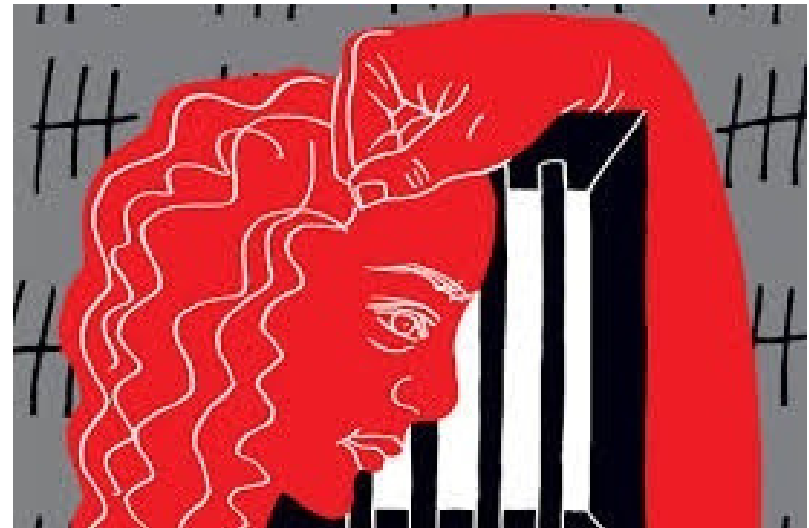
Source: Substance Abuse and Mental Health Service Administration (SAMSHA)

Trauma During Incarceration

Individuals can be traumatized while incarcerated as well.

1998 study:
1/10 (of 581 inmates)
reported being
physically assaulted within
6 months of interview

Source: Wooldridge, J. D. (1998)



Other Groups At Risk For Trauma



- Foster Youth
- Refugee students
- LGBTQ students
- Veterans
- American Indian/Alaska Native students

Trauma In College Students

What you might see:

- Difficulty focusing and recalling
- Withdrawal and isolation
- Missing a lot of classes
- Fear of taking risks



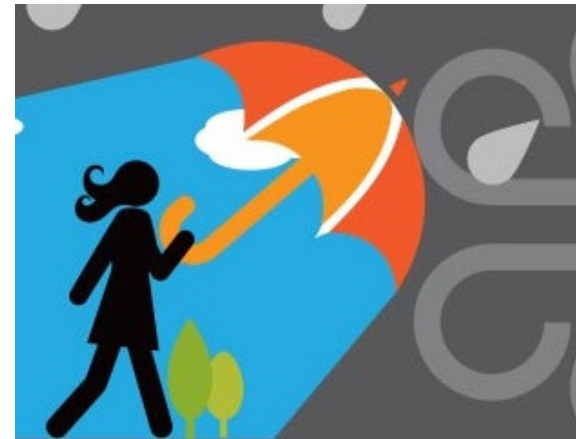
Source: Hoch, A., Stewart, D., Webb, K., & Wyandt-Hiebert, M. A. (2015, May).

Trauma Informed Approach: 3 Rs

A program, organization, or system that is trauma-informed:

- **Realizes** the impact of trauma and understands paths for recovery
- **Recognizes** the signs of trauma in students, staff, and others involved with the system
- **Responds** by integrating knowledge about trauma into
 - Policies
 - Procedures
 - Practices

Goal: Resist Retraumatization



Source: Hoch, A., Stewart, D., Webb, K., & Wyandt-Hiebert, M. A. (2015, May).

Safety & Trustworthiness



- Are first contacts welcoming, respectful, and engaging?
- How safe is the building or environment?
- Is information about tasks and procedures clear?
- Are roles and professional boundaries defined?

Source: Hoch, A., Stewart, D., Webb, K., & Wyandt-Hiebert, M. A. (2015, May).

Collaboration & Empowerment



- Are trauma survivors on an advisory board that evaluates services?
- Are opportunities to work with faculty advertised?
- Are each student's strengths and skills recognized?
- Are students encouraged to advocate for themselves

Source: Hoch, A., Stewart, D., Webb, K., & Wyandt-Hiebert, M. A. (2015, May).

Working With Trauma-Affected Individuals

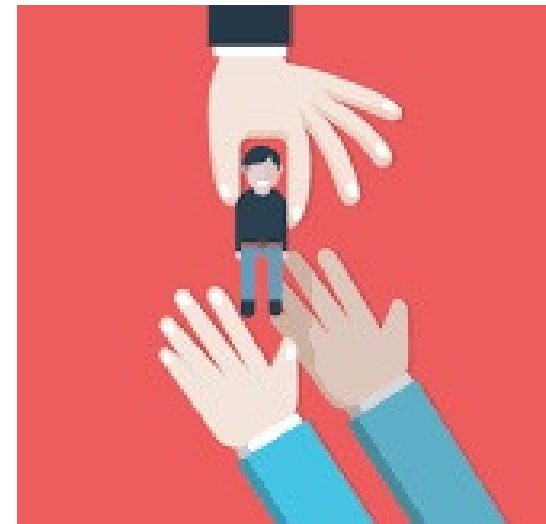


- Normalize and validate their feelings and experiences
- Empower them to better manage their current lives
- Check in & express concern for emotional safety

Source: Source: Knight, C . (2015); Carello, J., & Butler, L. D. (2014); Downey, L. (2013); Health Federation of Philadelphia (2010); Wolpov, R., Johnson, M. M., Hertel, R., & Kincaid, S. O. (2009)

Connecting the Dots: Warm Hand-Off

- Identify trauma informed allies on campus
- Identify allies at off campus service providers:
 - * Probation
 - * Department of Mental Health
 - * Workforce Development
 - * Department of Rehabilitation
 - * CSU & UC programs
 - * Housing



Getting the run-around, encountering unfriendly staff, or getting unreliable information can be re-traumatizing

Possible Career Development Challenges

- Limited awareness of skills, interests, values
- Criminal background serves as barrier to employment
- Lack of qualifications / low employment prior to and after incarceration
- Low educational attainment
- Housing, food, and transportation



Sources: Shivy et. al, 2007; Lebel, 2012; Unruh, Gau, & Waintrup, 2009

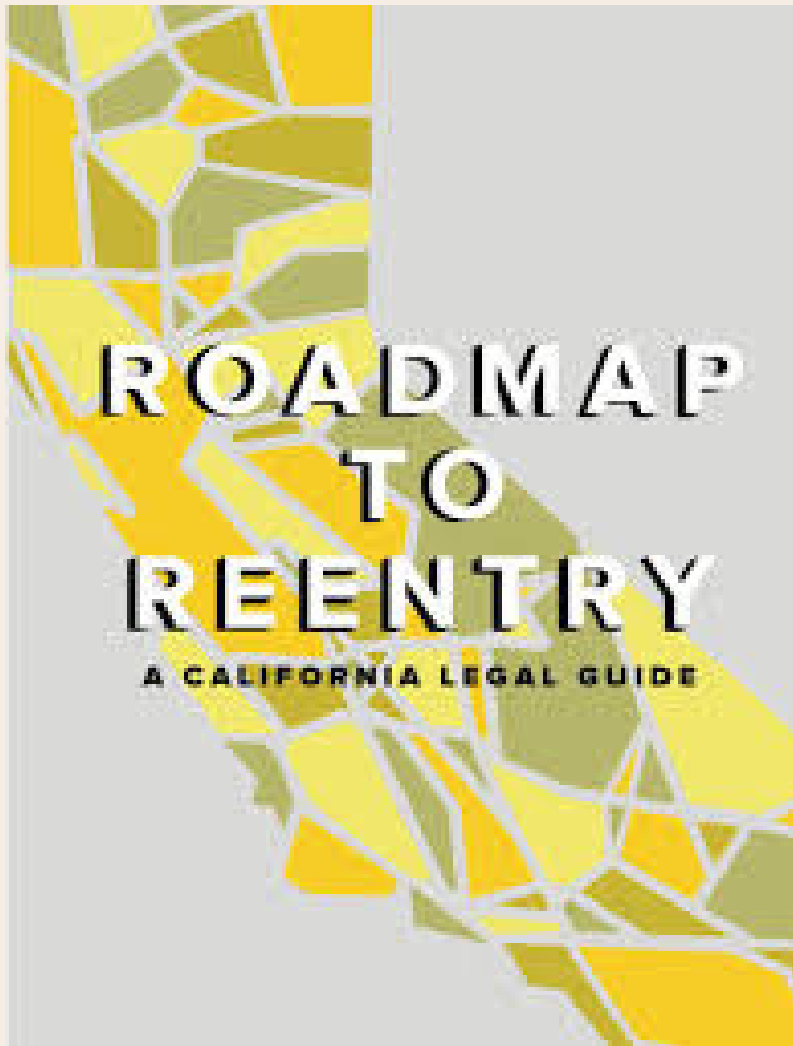
Possible Career Development Challenges

- Interpersonal difficulties
- Re-working identity
- Substance abuse disorder
- Mental or physical disability
- Negative thinking / Dysfunctional career thoughts



Sources: Laux et. al, 2011; Lynch & Sabol, 2001; Haney, 2006; Travis et. al, 2001; Shivy et. al, 2007

Root & Rebound: Reentry Advocates



- Provide several different guides (also: My Education, My Freedom & Employers' Fair Chance Hiring Toolkit)
- Provide trainings on how to use their resources
- Have a free legal hotline: 510-279-4662

Career Theories to Consider

Positive Psychology /
Strengths-Based Psychology

Narrative / Storied Approach

Planned Happenstance

Cognitive Therapy





"It is never too late to be
what you might have been."

- George Elliot

